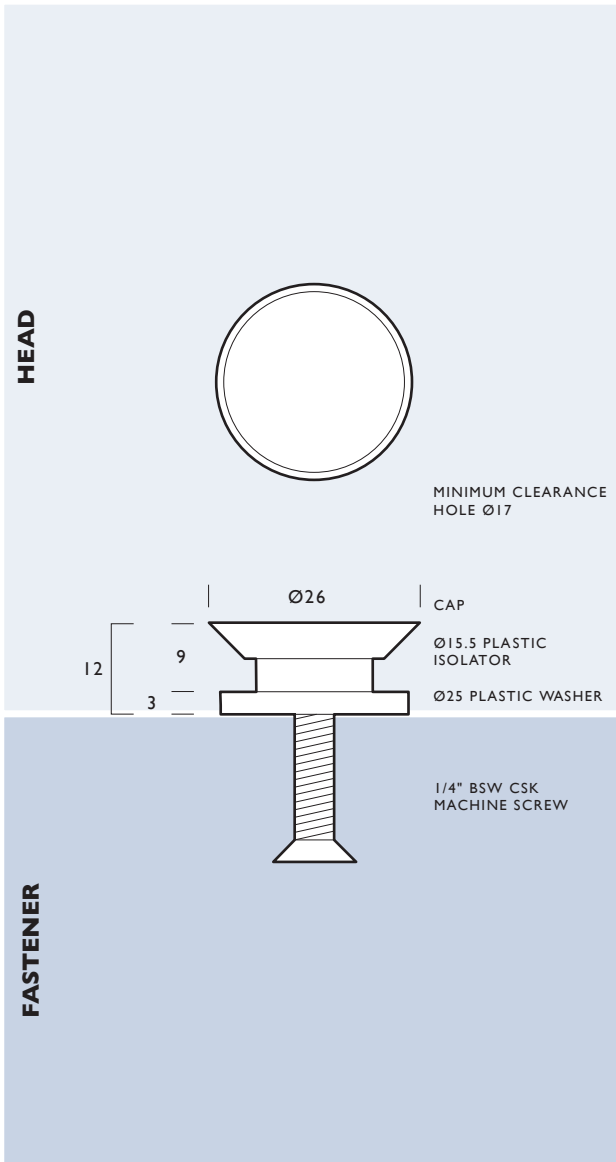
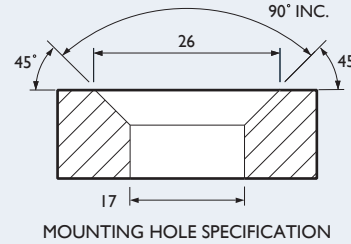
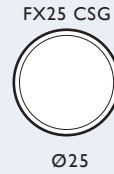


FX25 CSG COUNTERSUNK PIN

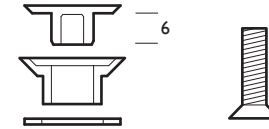
25mm DIAMETER COUNTERSUNK BACK FIXING



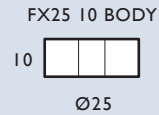
HEAD:



FX25 CSG FIXING PACK:



BODIES:



FASTENERS:

please nominate required screw length

- 1/4" B.S.W CSK MACHINE SCREWS

MATERIAL:

316 Grade Stainless Steel

PANEL THICKNESS:

Head Pack 10 - 12mm glass
Optional screws available:
any 1/4" B.S.W machine screw

MINIMUM CLEARANCE HOLE:

The clearance hole is 17mm, which is then countersunk to 26mm (refer to diagram).

THREAD:

Head: 1/4" B.S.W

FINISH:

Satin Stainless Steel

LOCATION:

Interior and exterior applications

PRODUCT COMPLIANCY:

As FIX Systems are not certified engineers, it is the buyer's responsibility to ensure that the application of all FIX products is suitable for its intended use and that it is compliant with relevant safety standards.

