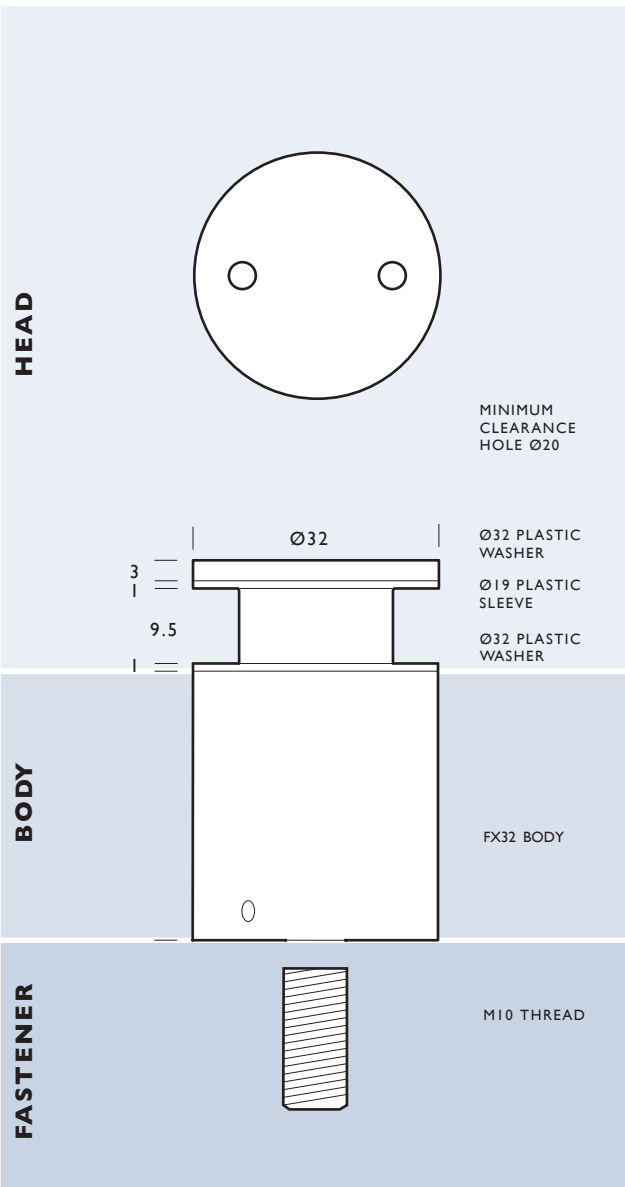


# FX32 DUO

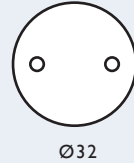
## LOW PROFILE

32mm DIAMETER STRUCTURAL LOW PROFILE HEAD

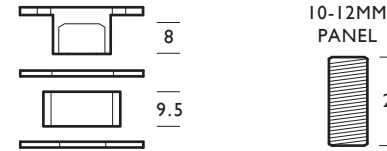


### HEAD:

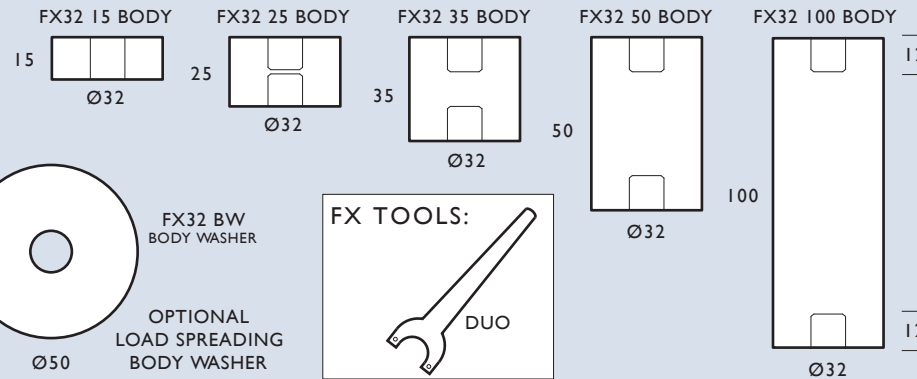
FX32 DUO



### FX32 DUO HEAD PACK:

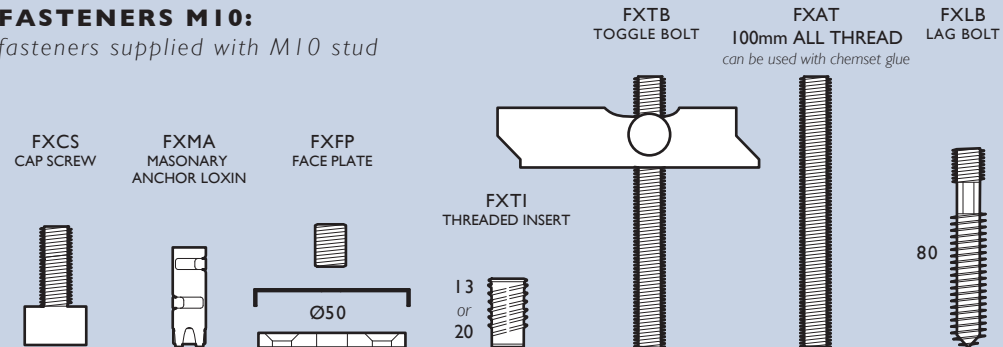


### BODIES:



### FASTENERS M10:

*fasteners supplied with M10 stud*



### MATERIAL:

316 Grade Stainless Steel

### PANEL THICKNESS:

Head Pack 10 - 12mm

Optional studs available:

16mm, 20mm, 25mm, 30mm,  
35mm, 40mm, 50mm

### MINIMUM CLEARANCE HOLE:

With isolating sleeve Ø20

Without isolating sleeve Ø17

### THREAD:

Head: M10 x 8mm

Fastener: M10 x 12mm

### FINISH:

Satin Stainless Steel

### LOCATION:

Interior and exterior applications

### PRODUCT COMPLIANCY:

*As FIX Systems are not certified engineers, it is the buyer's responsibility to ensure that the application of all FIX products is suitable for its intended use and that it is compliant with relevant safety standards.*

